

# **Evaluating the Academic Calendar: 2013 Update**

Summer 2013



# Project History

- 2009 - Academic Calendar change (2 semesters and 3 terms)
- 2010 – Evaluation of the New Academic Calendar
- 2011 – update of measures to include additional year of data
- 2012 – Academic Calendar change (3 semesters)
- 2013 – update to measures of academics showing comparison for three different calendar periods:

OLD = before 2009

NEW = 2009-2011

CURRENT = 2012 to current



# Measures of Academics

- Total students served
- Credit hours earned
- Cumulative GPA effects
- Current GPA effects



# Total Students (Fall)

Academic year	Total # of Students Enrolled
Fall 2005	2492
Fall 2006	2473
Fall 2007	2397
Fall 2008	2424
Fall 2009	2586
Fall 2010	2819
Fall 2011	2775
Fall 2012	2780

Calendar  
change



Calendar  
change



# Total Credit Hours Earned

---

Credit Hours	Old	New	Current
Winter	29,044	32,215	35,859
Spring	11,057	10,704	
Summer	3,023	2,254	22,705
First		8,474	
Fall	29,002	35,368	35,356.5
<b>Total</b>	<b>72,126</b>	<b>89,015</b>	<b>93,920.5</b>



# Average Credit Hours per Student

---

Credit Hours	Old	New	Current
Winter	12.5	13.6	14.8
Spring	6.3	6.6	
Summer	5.1	5.3	13.5
First		6.5	
Fall	12.4	13.6	14.7
<b>Total</b>	<b>21.36</b>	<b>25.07</b>	<b>26.71</b>

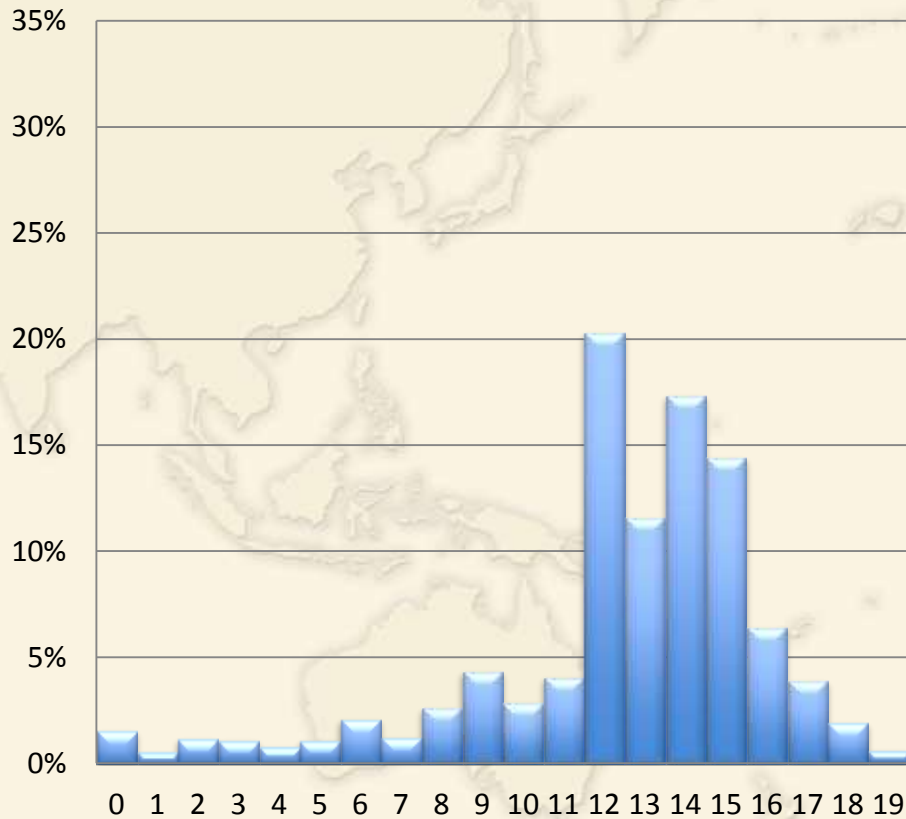
---



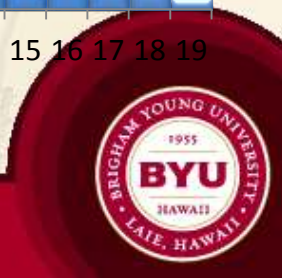
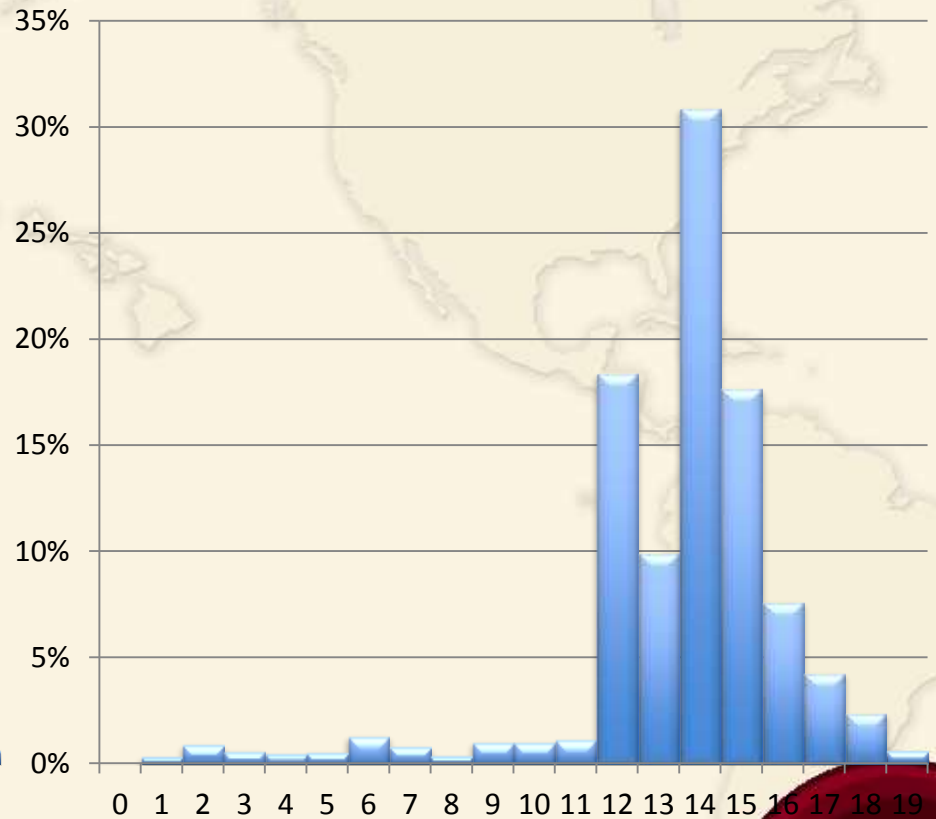


# Average Credits Passed New vs. Old Schedule Fall Semester

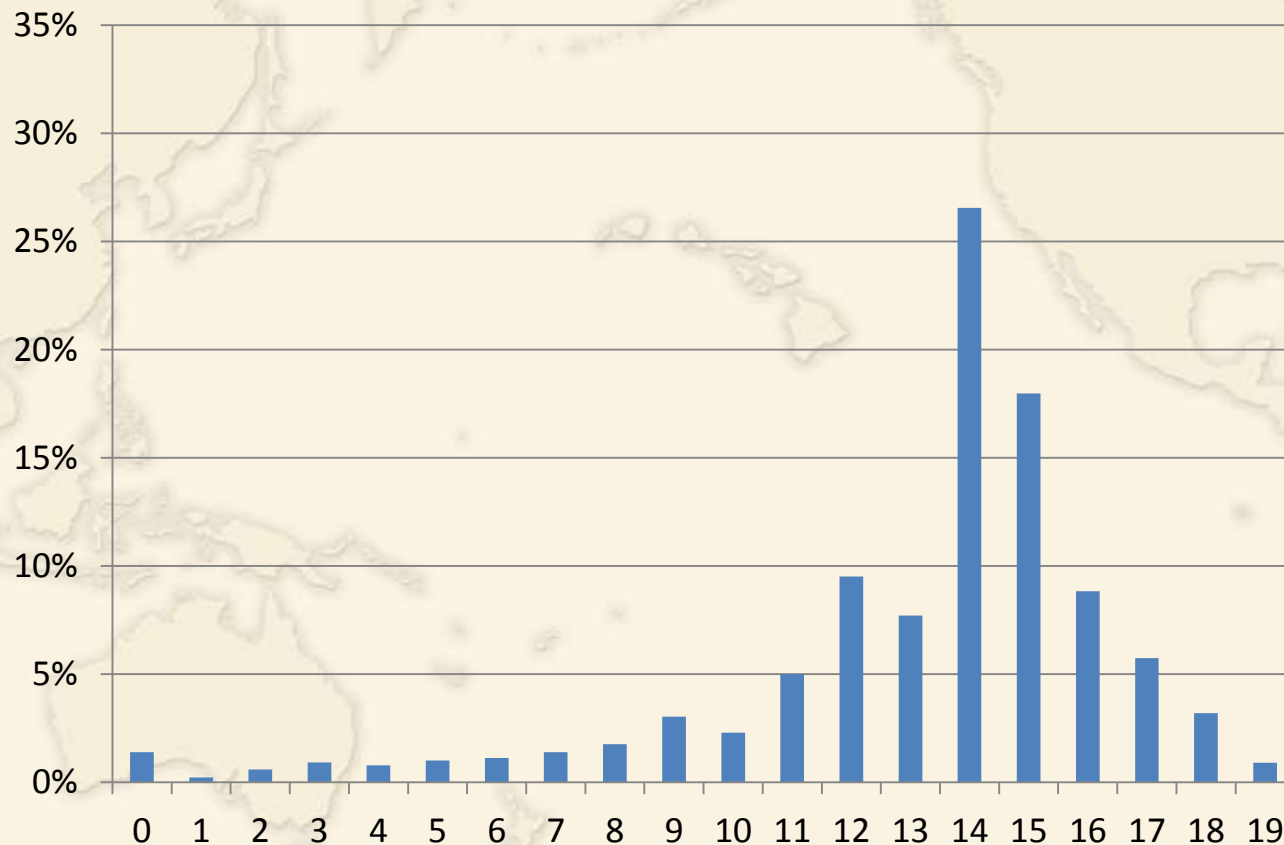
Fall Old Calendar



Fall New Calendar

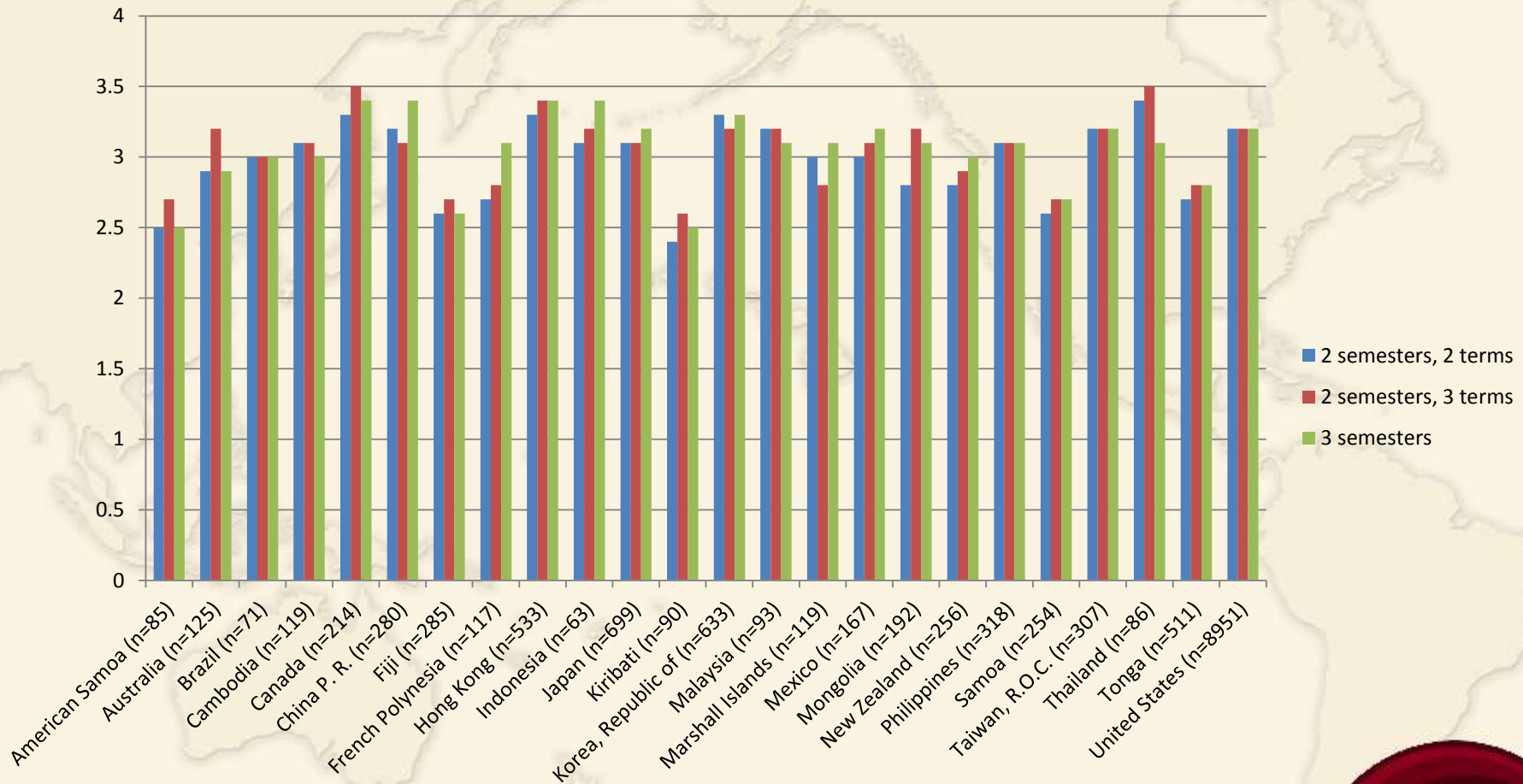


# Average Credits Passed Current Fall Semester





# Country Cumulative GPA Effects



# Groupings by Regions:

**Asia Developed:** Hong Kong, Japan, Taiwan, South Korea, Singapore

**Asia Developing:** All other Asian countries (Ex. Philippines, Malaysia, Thailand, Mongolia, China, Indonesia)

**Pacific Developed:** Australia, New Zealand

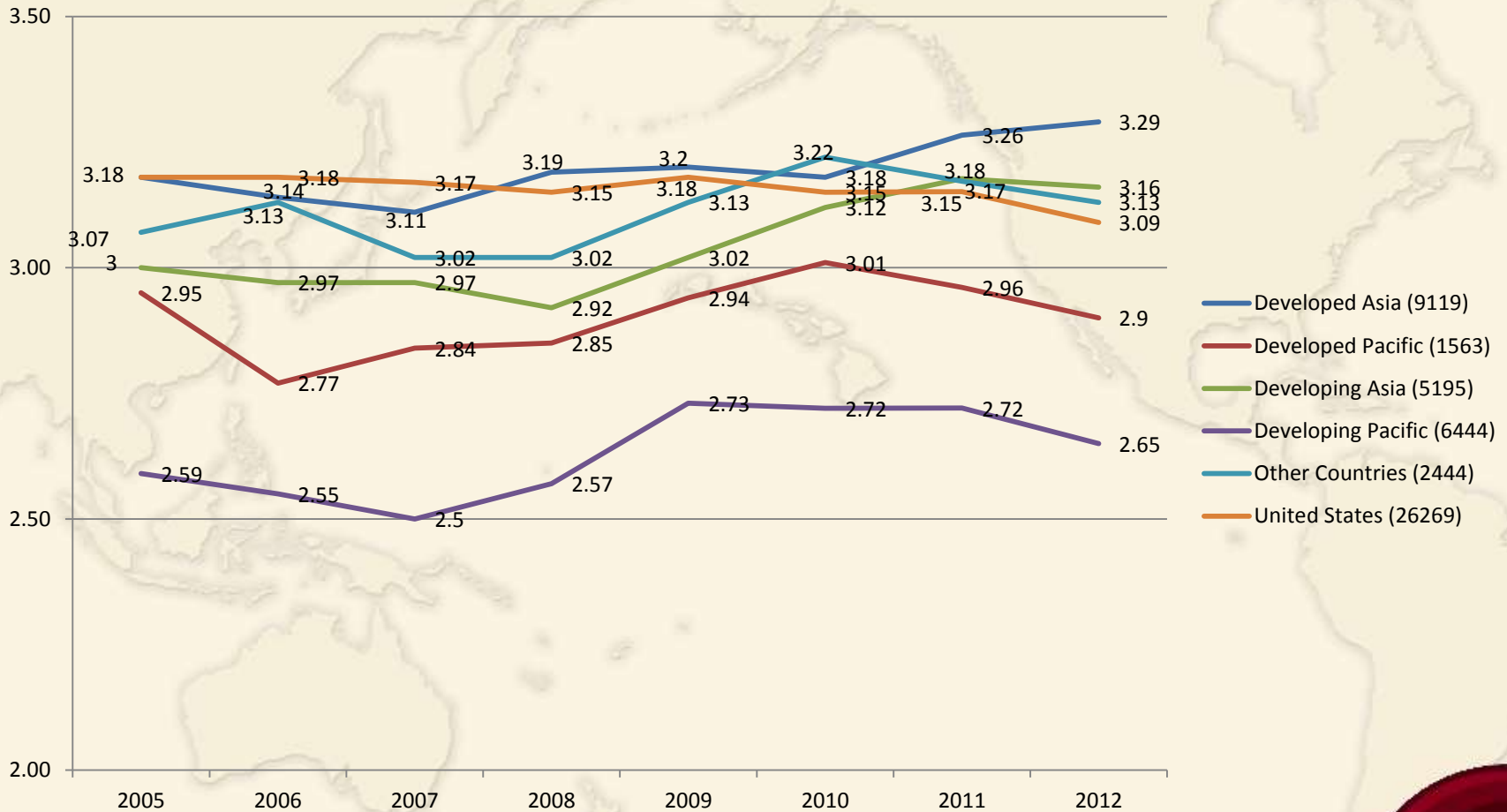
**Pacific Developing:** All other Pacific countries (Ex. Samoa, Fiji, Tonga, French Polynesia)

**United States:** All 50 states (does not include U. S. territories)

**Other Countries**



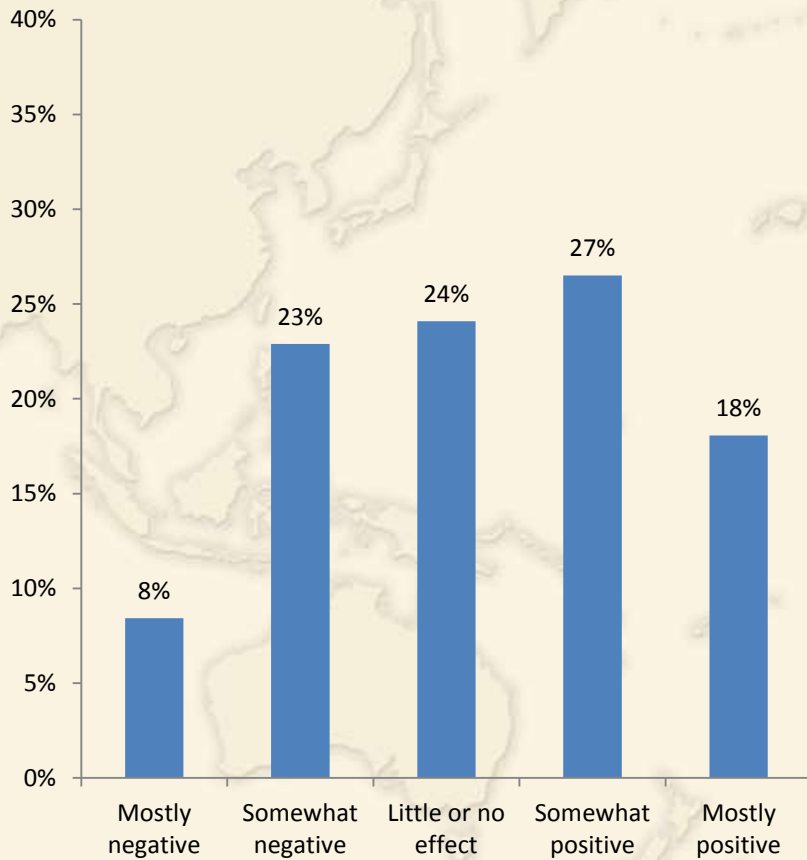
# A Longitudinal Look at Current GPA by Region



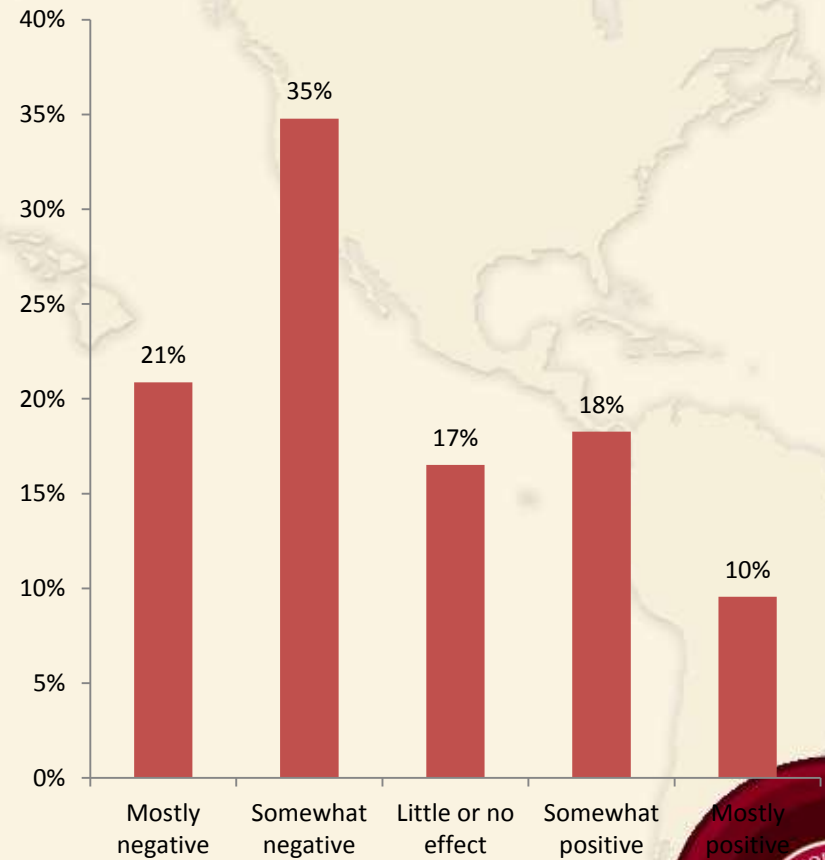
# GSS 2009

How did the changes in the schedule in 2009 effect your educational experiences at BYUH?

International Students

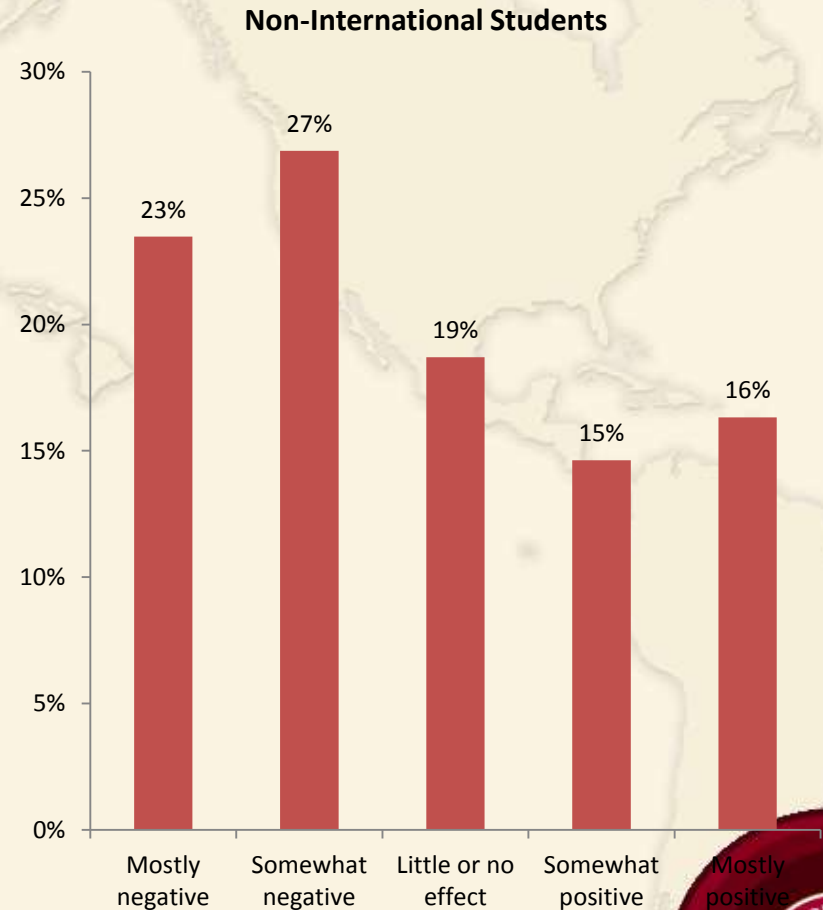
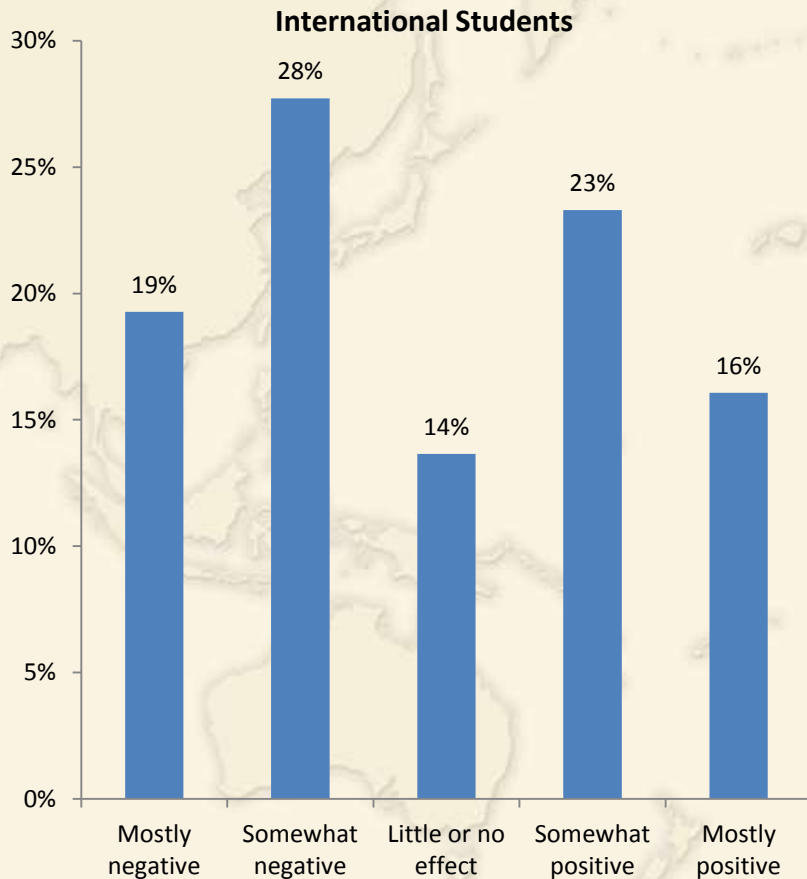


Non-International Students



# GSS 2010

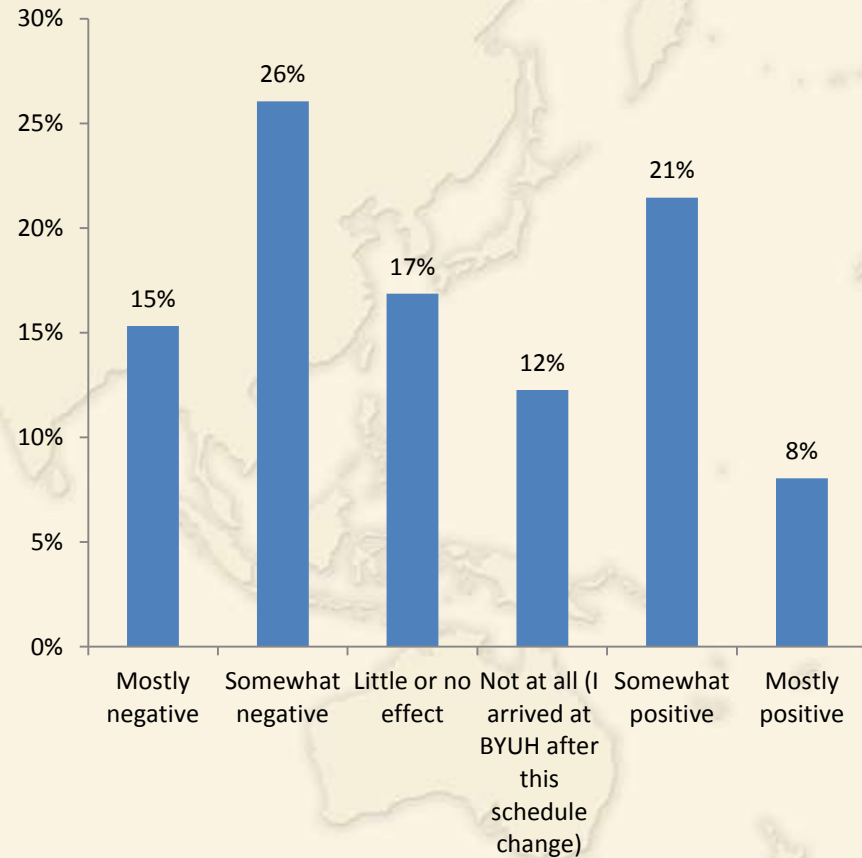
How did the changes in the schedule in 2009 effect your educational experiences at BYUH?



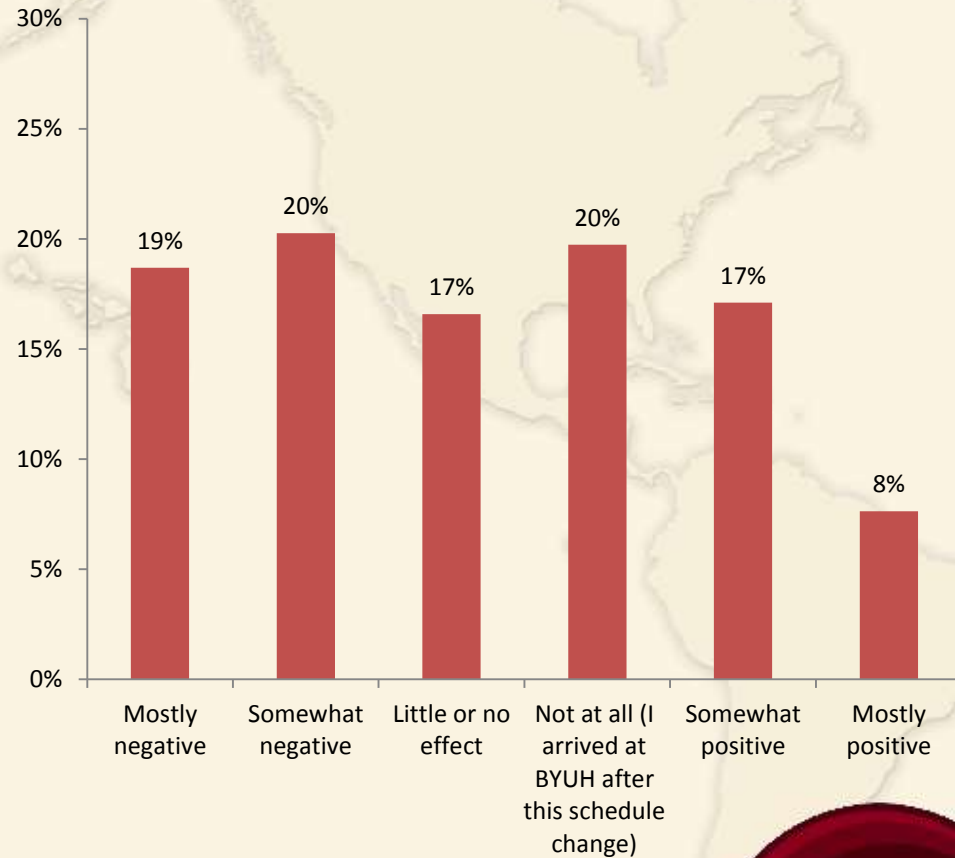
# GSS 2011

How did the changes in the schedule in 2009 effect your educational experiences at BYUH?

International Students



Non-International Students

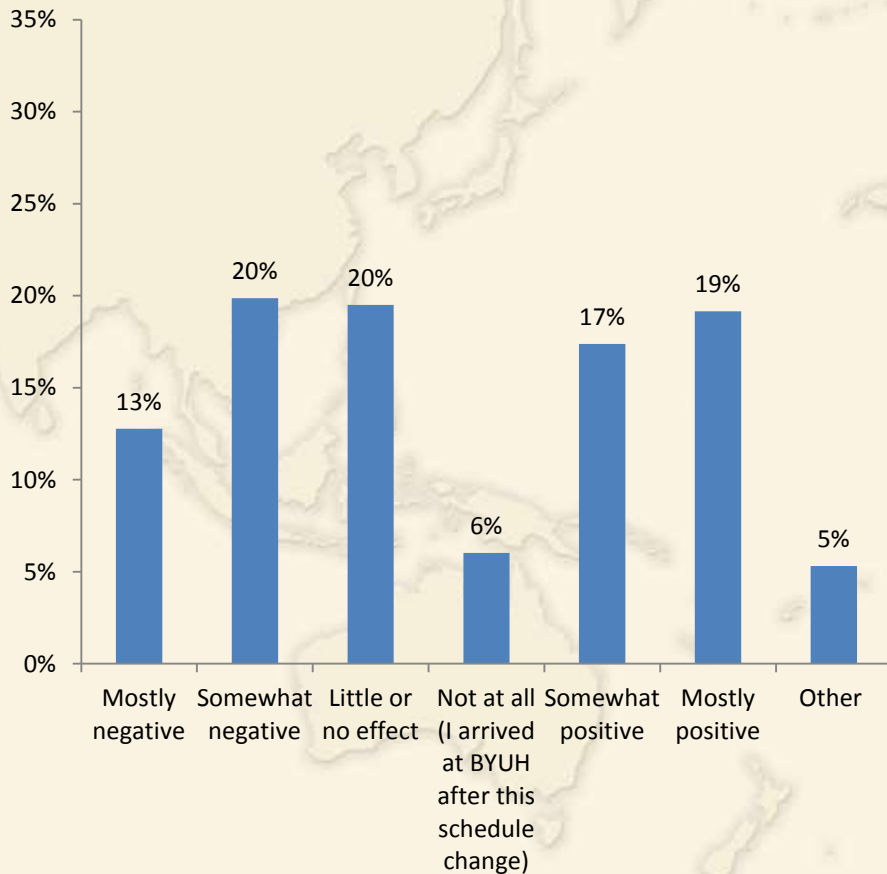




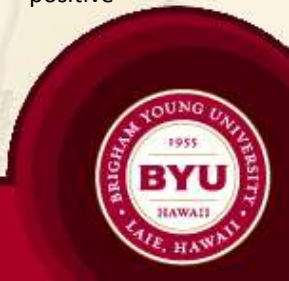
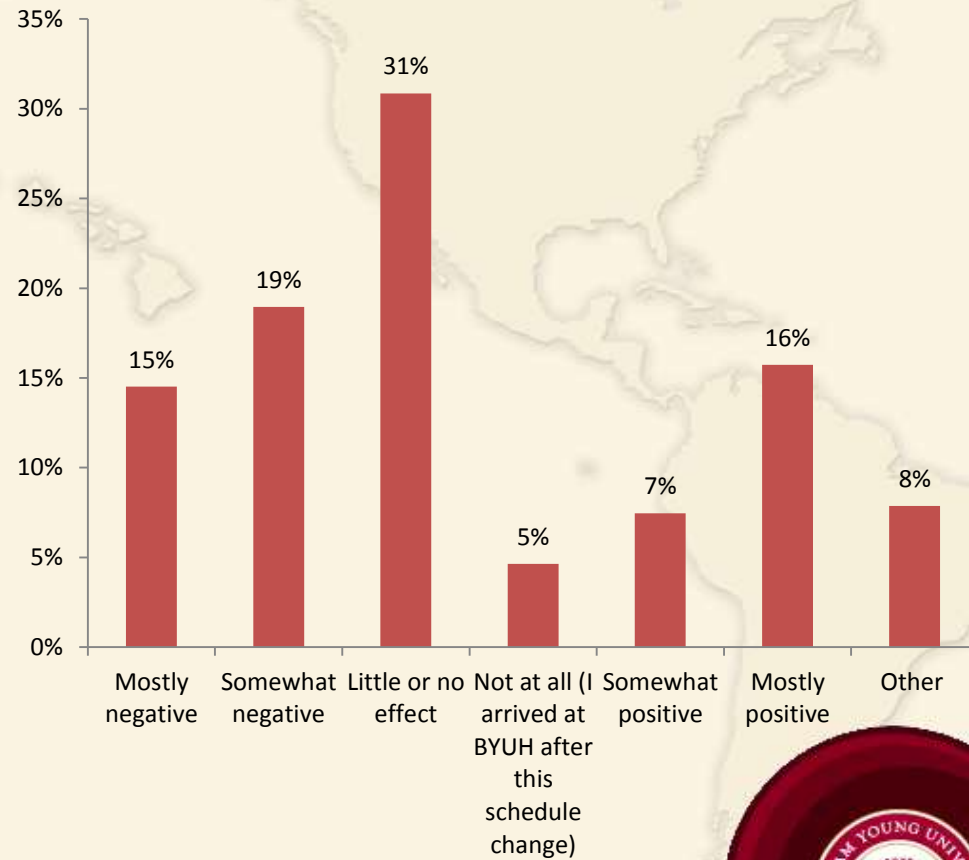
# GSS 2012

How did the changes in the academic calendar effect your educational experiences at BYUH?

International Students



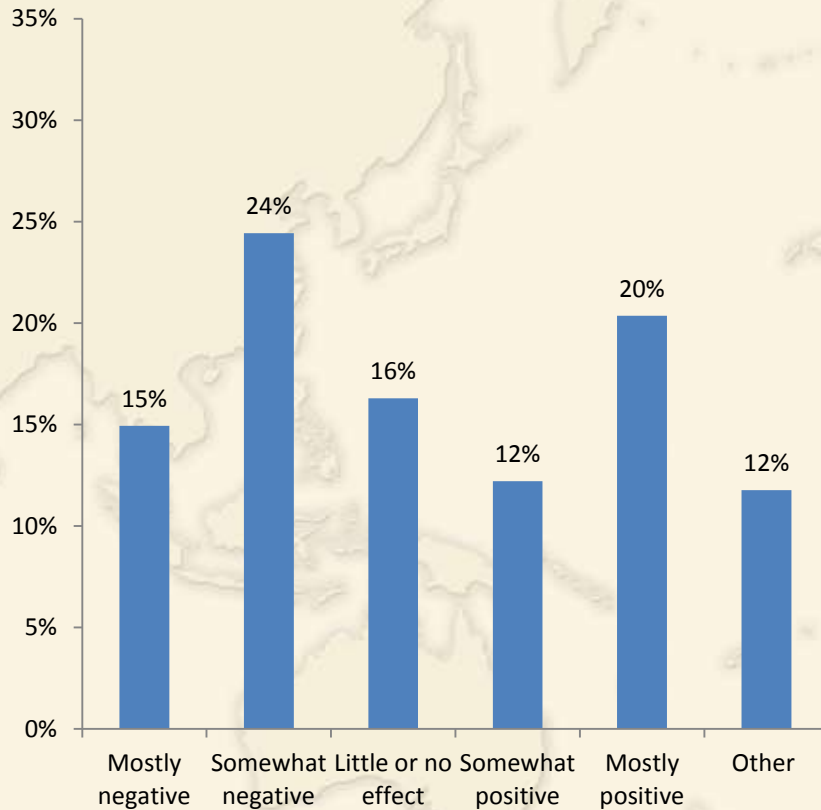
Non-International Students



# GSS 2013

How did the changes in the academic calendar and efforts to help students graduate faster effect your personal educational experiences at BYUH?

International Students



Non-International Students

